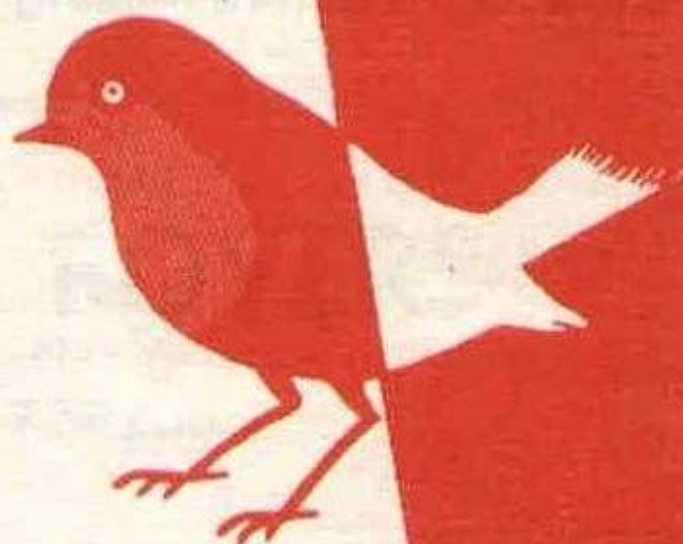


# SWINDON TOWN



## FOOTBALL CLUB

*Official Programme*

**6d.**



# Mills & Merricks Ltd

For over 70 years we have been one of Swindon's leading house furnishers, offering a personal service. You cannot do better than to inspect our showrooms before making your final decision.

Also contractors to

County and Borough Councils

Hospitals

Government Departments

Factories

Schools etc.

Think about it after the game!

We are open until 6 p.m. each evening and  
1 p.m. on Wednesdays.

Telephone 5365/6

**16-17 BRIDGE STREET, SWINDON**

**TUESDAY, OCTOBER 5th, 1965**

**DIVISION THREE**

**SWINDON TOWN**

**v.**

**BRISTOL ROVERS**

**Kick-off 7.30 p.m.**

---

**REFEREE:**

**Mr. G. MARTIN (Whitchurch)**

**LINESMEN:**

**Red Flag—Mr. H. V. GISBORNE (Sherborne)**

**Yellow Flag—Mr. T. JENKINS (Newport)**



**Wiltshire's most versatile  
Printers**

## **THE BOROUGH PRESS**

**Eastcott Hill, Swindon**

**Telephone 4022**

### **Maylott Studios**

**For GROUP & SPORT Photographs**

Official Photographer to  
Swindon Town Football Club

**31 FARINGDON ROAD**

**TEL. 22792**

### **Notton's Cafe**

**COUNTY ROAD**

**200 yards from Ground**

**RIGHT ON THE BALL**

### **L. Wollen**

**OFF LICENCE**

**WINES and SPIRITS**

**Arkell's Ales and Stout**

**373 Cricklade Rd., Swindon**

**Deliveries Daily**

**Phone 3508**

### **C. DUNN & SON**

**Builders & Decorators**

Alterations, Renovations,  
Conversions, Plumbers &  
Sanitary Engineers

**503 CRICKLADE RD. Tel. 22522**

## **W. COLLINS (Swindon) LTD.**

**TURF ACCOUNTANTS**

**69 COMMERCIAL ROAD - SWINDON**

**TEL. 21333**



# SWINDON TOWN FOOTBALL COMPANY LIMITED

Registered Office: COUNTY GROUND, SWINDON

## Directors:

Mr. W. J. CASTLE (Chairman)

Mr. H. E. LANE (Vice-Chairman)

Messrs. F. L. COLLINGS, A. W. DONE, M. EARLE, R. FRICKER, C. J. GREEN,  
F. PLYER, H. WILLIAMS and K. H. WILMER.

Manager: D. WILLIAMS.

Secretary: R. A. MORSE.

---

**VOL. 16**

**TUESDAY, OCTOBER 5th, 1965**

**No. 4**

---

## CLUB NOTES

These notes must be written before the game at Watford, so no mention can be made of that, or the bearing the result may have upon our position in the league table.

When the season opened, many supporters felt that if at the end of the first ten games Swindon had gained ten points, the team would be doing well, as of those ten games, *seven* were to be played away from home.

At the moment the club has ten points to its credit, so whatever happens at Watford, we shall at least have a minimum of ten points, possibly our aim when the programme began. We might quite easily add to that number, as up to the present the best displays have been on opponents' grounds.

Whilst we sincerely trust the fine away form will be maintained, we do hope spectators will see some goals scored at the County Ground.

Our last two games, both away, have been lost, but on each occasion the team played extremely well and provided, in each case, the best match and the best football of the season. Such was the case at Darlington where we only lost in the last seven minutes, and again at Southend when after being 1-3 down at half-time, Swindon over-ran their opponents in the second half.



# WILSONS (SWINDON) LTD.

BUILDERS OF MODERN ATTRACTIVE  
HOUSES AND BUNGALOWS

Enquiries to:

HEAD OFFICE: 90 COMMERCIAL ROAD, SWINDON 6361  
SITE OFFICE: COVENTRY FARM ESTATE, WROUGHTON 271  
SITE OFFICE: COLEVIEW ESTATE, STRATTON S.M. 314

Tel. Swindon 5884

**W. J. SELWOOD**

*Saddlery*

General Leather Goods Manufactured  
and Repaired to Your Individual  
Requirements

148a MANCHESTER ROAD  
SWINDON, WILTS.

Always at your service

**L. BIBBY**

For all Types—Rags, Iron and Metal,  
etc. Spot Cash Paid. Please Tel. 2101  
and our van will call.

THE PADDOCK, ERMIN STREET  
STRATTON ST. MARGARET

**WISES CATERING  
SERVICE**

(Reg. Wise)

Our Caterer for the past 17 seasons  
Guarantees

A GOOD CUP OF TEA AT THE  
COUNTY GROUND

A full range of Sweets & Cigarettes  
at any of our five kiosks on your  
way in. ENJOY YOURSELF

FOR

**T.V. Rentals**

GO TO

**Warnes Rentals Ltd.**

51 COMMERCIAL ROAD,  
SWINDON

Phone: 6486

## MARSHGATE GARAGE LTD.

Motor Engineers :: Rootes Group Dealers  
STRATTON ROAD - SWINDON - WILTS.

Tel. Swindon 22788

TWO MINUTES FROM GROUND



## CLUB NOTES—continued

Whilst maybe the final result was disappointing, it is good to know the side is playing such excellent football. Gone, thank goodness, in our case, is defensive football — the wall of seven defenders, with three forwards roaming in the wilderness.

Bristol Rovers, whom we entertain this evening, play the open, attacking football, so we feel confident that the spectators will be fully entertained for the whole of the ninety minutes.

Can we hope for a repeat of that great game at Bristol on Tuesday, 7th September? Probably the finest one we shall be fortunate enough to witness this season.

In our last programme we wrote appraisingly of the Rovers' policy and their determination to carry it out, namely, to develop good team-work at all levels, to promote good football, and *not to win* at any price.

We certainly saw those ideals carried out to the letter at Bristol — a great game, no gamesmanship, few fouls (none deliberate), no wasting of time, trainers not required throughout the game.

Thank you, Bristol! We do hope most earnestly for a repeat by both teams tonight.

The last time the two teams met here was on Tuesday, 2nd October, 1962, following our amazing defeat at Halifax, when Swindon lost 3-4 after leading 3-1 with fifteen minutes to go to full-time. However, our lads came back to form against Rovers, the result being a win of 3-0 in our favour. The teams



# **BRISTOL OMNIBUS CO. LTD.**

**REGENT CIRCUS, SWINDON**

**Tel. 22243**

For all your travel requirements

- ★ **Express Coach Service**
- ★ **British and Continental Holidays**
- ★ **Air Travel bookings**
- ★ **Butlin's Camps and Hotels**
- ★ **Bus Services in the West**

**LUXURY COACHES FOR PRIVATE HIRE**

**Suppliers to the Swindon Town Football Club**

## ***Swindon Sports Centre***

**SUPPORTERS SCARVES - RATTLES - Etc.**

**23 COMMERCIAL ROAD**

**Tel. 4270**

ESTABLISHED 1923

## **DOBELL SHEARMAN**

**& CO. LTD.**

**£10 TYPEWRITERS from £10**

Also full selection new standard and portable typewriters  
**OFFICE EQUIPMENT**

**29 High Street & 33 Faringdon Road, Swindon.**

**Tel. 4961/2**



## CLUB NOTES—continued

make interesting reading:— Swindon — Turner; Wollen, Trollope; Morgan, Owen, Woodruff; Summerbee, Hunt, Smith, Jackson, Darcy. Bristol Rovers — Million; Bradford, Jones, G.; Bumpstead, Sykes, Mabbutt; Jarman, Williams, Oldfield, Hamilton, Jones, R. Quite a few changes in the composition of the teams in what is almost three years. If memory serves us right, the long throw of Bobby Woodruff was much in evidence in this game, having quite an influence on the scoring of the goals.

However, the following week the Rovers had their revenge, as Swindon were soundly beaten 0-2 at Eastville. For our sakes we hope there is no revenge tonight for the game earlier in the season.

Yet another newcomer has been added to the staff at the County Ground, namely our new centre-forward, Jimmy Lawton. We wish him well and trust he will soon be *among* the goals.

Many of our supporters, especially those who regularly attend Reserve games, will no doubt be sorry to see the departure of Alan Sproates. A quiet, likeable lad, and what a worker! Always in the game, wanting the ball, never once doing anything to harm the image of football — a fine ball player; and, to quote a newspaper report, almost a human dynamo. We wish him well at Darlington.

This makes him the fifth player to leave the County Ground during the past few months:— Dennis Peapell to Exeter, Mike Summerbee to Manchester City, Bill Atkins to Halifax and Ernie Hunt to Wolverhampton. We hope they will all be happy and successful with their new clubs. Supporters will follow with great interest the progress of these lads.



# OUR VISITORS

It is our particular pleasure to welcome to the County Ground this evening the Directors, Officials and Players of Bristol Rovers Football Club. With the memory of the game we played at Bristol on September 7th still fresh, we hope, whatever the result, the game tonight will be as entertaining and thrilling.

Details of the Rovers' players from whom tonight's team will be selected are as follows:—

## **ALFIE BIGGS**

Captain of the Club, Bristol — born, aged 29. Joined the Rovers soon after leaving school in Season 51/52. Transferred to Preston North End in the summer of 1961 — and brought back again a year later for a club record fee. Created another club record in 1963-64 by scoring 37 goals in League and Cup.

## **RONNIE BRIGGS**

Northern Ireland international goalkeeper, aged 22, and is notable for his imposing physique—standing 6ft. 3in. and weighing around 14 st. Spent some seasons with Manchester United as a youngster, and came to Rovers after a year's service with Swansea Town.

## **JOHN BROWN**

A farmer's son, and born in Cornwall, John is 25 years old and can play in all forward positions other than outside-left. Joined Plymouth Argyle in Season 1960-61 as a professional, and came to Rovers in July 1963. A regular for most of the last two seasons, and justified his selection by hard work and an ability to snap up half-chances. Height 5ft. 8ins., weight 11st. 4lbs.

## **JOE DAVIS**

Current "Clubman of the year", Joe is a Bristolian, aged 27, and cousin of colleague Bobbie Jones. Joined Rovers in 1955, direct from a local amateur side. Normally centre-half, Joe also performs creditably at wing-half and full-back. Height 5ft. 9ins., weight 11st. 6½lbs. During Alfie Biggs' long absence through injury last season, Joe captained the side with distinction.

## **ROGER FRUDE**

Although only 18, has been at Eastville over three years, having completed his soccer apprenticeship. Possessed a great natural ability, Roger has a deal of representative experience behind him, including English Youth International appearances. A tall inside-forward, standing 6ft. and weighting 10st. 12lbs.



**G. H. FLOWER & SON LIMITED**

WOOD LANE, CHIPPENHAM

LICENCE No. S.2802

PHONE 2017

## **SCRAP METAL**

and

**GENERAL WASTE SALVAGE DEALERS**

Plant dismantling carried out

Members of  
**National Association of Non-Ferrous Metal Merchants**

---

## **THE PORK SHOP**

(Swindon Bacon Curing Co. Ltd.)

Specialists in

**BACON - PORK - COOKED HAM**

**50 FLEET STREET - SWINDON**

**TEL. 22122**

---

Meet your friends for an enjoyable evening at

## **THE KINGSDOWN ARMS**

(Host A. W. Vann)

**FULLY LICENSED - ARKELL'S BEERS**

**SNACKS - Etc.**

**STRATTON ST. MARGARET**

**Tel. 3283**



**IAN HAMILTON**

Bristolian. Joined Rovers in 1956, became a full-time professional early in 1962 on completion of his apprenticeship in the aircraft industry. Another player recruited from local amateur football after leaving school. His father and late brother were also Rovers' professional players. Height 5ft. 8½ins., weight 10st. 9lbs., age 25.

**BERNARD HALL**

Born at Bath, July 1942. Signed as a part-time professional in September 1959 after serving as an amateur for a year. Completed an apprenticeship as a stonemason, and signed as a full-time professional in July 1963. An ever-present for the last two seasons, at 23 Bernard is something of a young veteran. Height 5ft. 10ins., weight 11st.

**DOUG HILLARD**

Another Bristolian whose only professional club has been Bristol Rovers. Signed professional forms in July 1957. Originally an inside-forward, he has been the Eastville club's regular right-back for several years. Was the first holder of the Rovers' "Clubman of the Year" Award in May 1963. Height 5ft. 8½ins., weight 12st. 12lbs., age 29.

**HAROLD JARMAN**

Bristolian. Joined Rovers in 1959 from Victoria Athletic, a local amateur club. Harold is also a county cricketer with Gloucestershire. Regular right-winger for the last four seasons, he really came into his own in 1963-64, scoring 17 goals; most of them in spectacular fashion. Height 5ft. 8ins., weight 10st. 12lbs., age 26.

**BOBBY JONES**

Bristolian. Can fill any forward position, and has a great natural speed that often leaves defenders standing. Can shoot with either foot. Joined Rovers in Season 1955-56, one of several players to come from Soundwell, a local amateur club. Height 5ft. 8½ins., weight 11st. 12lbs., age 26.

**GWYN JONES**

Welsh Under-23 international — left back. Born Caernarvon. Transferred from Wolverhampton Wanderers in July 1962 after seven years' sterling service with the famous Midland club. Has considerably strengthened Rovers' defence. Height 5ft. 10ins., weight 11st. 12lbs., age 30.



- ★ Cedarwood Sheds
- ★ Workshops and Greenhouses



Made locally by

**H. R. SPACKMAN**  
SHRIVENHAM ROAD - SWINDON - WILTS.  
Telephone Swindon 4458





# W. J. CASTLE

Office and Bakery:  
4 and 5 MARKET STREET

SWINDON

Telephone 22017

## Specialists—

BIRTHDAY CAKES - WEDDING CAKES  
DAIRY CREAM - PASTRIES  
BUNS - ROLLS - SPONGES

Do not let **CHILBLAINS** spoil a good game



## RELAPERNE

Price 2/6 from your CHEMIST

2/10 Post Paid from

**BALLARD & CO. (CHEMISTS) LTD.**

**FARINGDON - BERKS**



## **OUR VISITORS—continued**

### **RAY MABBUTT**

Current holder of the "Harry Bamford Memorial Trophy", Ray is popular with the fans for his non-stop, never-say-die displays. Graduated from inside-forward to winger, and established himself as regular left-half some years ago. Born in Aylesbury (Bucks.), Ray joined Rovers in 1955 and is aged 29. Height 5ft. 6ins., weight 10st. 1lb.

### **ALEX MUNRO**

21 years of age. Joined Rovers as a full-time professional in October 1962, from the famous Drumchapel Amateur Club in his native Glasgow. Has shown much promise, and played in Rovers' League side at 18. Height 5ft. 9½ins., weight 10st. 13lbs.

### **ROY McCROHAN**

Joined Rovers from Colchester in August 1964. Born in Reading, played for Reading schools and signed as a professional for his home town club in 1949. Transferred to Norwich City, June 1951, where he spent 11 years, making 436 appearances and filling eight positions. Moved to Colchester in October 1963. Now established as a wing-half or full-back. Roy has played well over 500 League and Cup games, and is also a fully qualified F.A. coach. Height 5ft. 11ins., weight 12st. 1lb., age 34.

### **TERRY OLDFIELD**

A six-footer, weighting over 12 st., Terry was originally an inside-forward, but eventually made his mark as a right-half, filling the position for most of the last two seasons. Bristol-born, aged 26, Terry joined Rovers from local amateur club Clifton St. Vincents, eight years ago.

### **LINDSAY PARSONS**

Nineteen-year-old full-back, a Bristolian who became a professional in March 1964 after serving as an apprentice player since leaving school. Already a regular Reserve Team player, Lindsay has also been blooded in the League side. A strong youngster, standing 5ft. 9ins. and weighting 11½st.

### **JOHN PETTS**

On his day acknowledged as one of the best wing-halves in the Third Division, Johnny Petts joined the club from Reading for a two-month trial period. He was with Elm Park for two seasons, after serving several years with Arsenal. Aged 26, Johnny is married with 2 children and was an England Youth International. Height 5ft. 8ins., weight 10st. 9lbs.



## **OUR VISITORS—continued**

### **RICHARD PLUMB**

Swindon-born centre-forward, aged 19. Tall and wiry, Dick was signed from Swindon Town during last close season, where he had shewn good potential in Youth and Reserve team football.

### **KEN RONALDSON**

Edinburgh-born, 20-year-old inside or centre-forward, signed from Aberdeen in July 1965. Tall and well-built, Ken is at present a part-time professional while completing an electrical engineering apprenticeship. Made several Scottish League appearances at Aberdeen. Height 5ft. 11ins., weight 11st. 8lbs.

### **“WALLY” WATKINS**

Bristol-born 19-year-old inside-forward. Played in the Reserves as soon as he signed as an amateur late last season. Was with Rovers for a spell soon after leaving school, and spent a couple of seasons at Ashton Gate before returning to Eastville. Now a full-time professional, Wally has a cheerful disposition, and is lively on and off the field. Height 5ft. 6ins., weight 10st. 2lbs.

### **CHRIS WELLER**

Reading-born inside or wing-forward, joined Rovers last June, after spending six seasons with Bournemouth and Boscombe, during which time he made 84 League appearances. Born on Christmas Day twenty-five years ago. Height 5ft. 8½ins., weight 11st. 2lbs.

### **DAVID STONE**

Bristolian. Joined Rovers straight from school in 1958/59 after a highly successful season with Bristol Schoolboys, winners of the English Schools' F.A. Shield. Became a professional at the age of seventeen, and made his First Team debut in May 1961. Position, right-half or centre-half. Height 5ft. 10ins., weight 12st. 5lbs., age 22, and was married last summer.

### **KENNY RENDALL**

Former Gloucestershire County player; signed as a part-time professional in February 1964 after nearly three seasons' service as an amateur. Very much a utility man and wholehearted in attack and defence, Ken is 21 years old, a Bristolian, 5ft. 8ins. tall and 11 st. in weight.

### **ROGER TOVEY**

Nineteen-year-old Bristolian, part-time professional, wing-half or wing-forward. Slightly built, but tenacious in the tackle, and popularly known as “Garth”, Roger weighs 9½st. and is 5ft. 7ins. in height.



# **H. HIBBERD LIMITED**

**40 NEWPORT STREET, SWINDON**  
**PLANT HIRE CONTRACTORS**



**TRACTORS & SCRAPERS**  
**BULLDOZERS**  
**DROTT SHOVELS**  
**TRAXCAVATORS**  
**DIGGERS**  
**TELEPHONE - SWINDON 6125**



## Hatton's Newsagency

A. J. D. & N. J. Woodhouse

Newsagents :: Tobacconists  
Confectioners

Agents for Wessex School of  
Motoring

Booking Agents for Rimes Coaches

6 Regent Circus (near G.P.O.)

Telephone Swindon 22731

## HULFORD MOTORS Ltd.

### SELF DRIVE HIRE

Fleet of 1965 Fords  
Anglias De-Luxe - Cortinas  
De-Luxe - Zephyr 4s.

### SHRIVENHAM ROAD

(200 yards from Football Ground)

Phone 4934

Large Car Park available

For High Class  
Central Heating, Plumbing  
Painting and Decorating  
Electrical Installations  
and Repairs

## NORTH WILTS Sanitary & Heating Co. Ltd.

NEWPORT ST., SWINDON

Phone 5373/4

## FLOODLIGHTING?

## Warnes Installations

## BATHURST CORNER, COUNTY ROAD

Electrical Contractors to

LET US QUOTE FOR YOUR ELECTRICAL

RIGHT WING

SWINDON TOWN

Downsborough

Butler (2)

Morgan (4)

Nurse (5)

Weaver (7)

Smart (8)

Lawton (9)

Bristol's 12th Man  
DAVIS

EVERY FRIDAY 6D. EVERY

SWINDON

ECHO

Swindon Colours:  
RED SHIRTS, WHITE SHORTS

EVERY FRIDAY 6D. EVERY

Munro (11)

Jones (R) (10)

Biggs (9)

Mabbutt (6)

Stone (5)

Jones (G) (3)

Hall

LEFT WING

Bristol Rovers

## MILLS & MERRILL

For over 70 years we have been one of Swindon's  
offering a personal service. You cannot visit our  
showrooms before making your final decision.  
Also contractors to: County and Borough Councils,  
Government Departments - Factories - Schools, etc.  
Think about it after the game! We are open  
1 p.m. on Wednesdays.

16-17 BRIDGE STREET, SWINDON.



# Installations Limited

DUNTY RD., SWINDON. Tel. 27291

Contractors to the "Town"

R ELECTRICAL CENTRAL HEATING

SWINDON TOWN

LEFT WING

Marlborough

Trollope (3)

Nurse (5)

Atherton (6)

Dawton (9)

Brown (10)

Rogers (11)

FRIDAY 6D. EVERY FRIDAY

SWINDON

ECHO

DAY 6D. EVERY FRIDAY

Swindon's 12th man  
DAWSON

These teams are subject  
to alteration

Biggs (9)

Brown (8)

Jarman (7)

Stone (5)

Petts (4)

Hillard (2)

Hall

Bristol Rovers

RIGHT WING

# MERRICKS LTD.

one of Swindon's leading house furnishers,  
you cannot do better than to inspect our  
final decision.

and Borough Councils - Hospitals - Govern-  
Schools, etc.

We are open until 6 p.m. each evening and

SWINDON.

Tel. 5365/6

# McILROY'S

# RESTAURANT

for morning coffee,  
luncheon and  
afternoon tea - in  
pleasant surroundings -  
you will find McIlroys  
are top of the  
'league'.

Full table service, best Beers  
and Wines. Parties and  
Functions catered for.

# McIlroys Restaurant

64-72 Regent Street

Tel. 5294



THE ALCOHOL FUEL

# COATE GARAGE

REPAIRS - OVERHAULS - WELDING  
SERVICING - REBORING - TYRES

Props. E. V. & W. H. Mattick

Marlborough Rd., Swindon



## SUPPORTERS' CLUB NOTES

The weekly competition is steadily increasing in its sales of tickets, which now approximate to 2,600 per week, and these should still further increase with the re-introduction of the daily draw prizes in week 7. There is still an urgent demand for additional agents, however, and anyone willing to act as an agent is asked to contact secretary Tom Stenning, 40 Hesketh Crescent, or at Club headquarters. As already announced in a previous programme, it is proposed to hold a grand Christmas Draw this year and tickets will be available in the near future. The prizes offered are as follows:

1st Prize—£40 and Hamper of Goods value £20

2nd Prize—£20 and Hamper of Goods value £15

3rd Prize—£10 and Hamper of Goods value £10

4th Prize—£5 and Hamper of Goods value £5

and 100 other prizes of Wines, Spirits, Chocolates, etc., etc., to the value of £125.

Price of Tickets—1s. each.

There is always a very keen demand for tickets in our Christmas Draw, which is hardly surprising, as it is probably the most attractive draw locally, and would-be purchasers of tickets are advised to make their purchases as soon as the opportunity presents itself to avoid disappointment.

Since our last issue, the Supporters' Club Football team have played two matches. Losing at home to "Square D" by 3 goals to 2, and beating "Royals F.C.", away, 5-1.





This space  
reserved



## **SUPPORTERS' CLUB NOTES—continued**

Fixtures for October are as follows:

October 3rd: Park Boys' Club—Home

October 10th: Square D—Away

October 17th: Royals F.C.—Home

October 24th: Carpenters Arms—Home

October 31st: S.E.B.—Away

### **Collection**

Today's collection is W. Shergold's benefit collection and supporters are asked to show their appreciation of the players loyal service in their customary generous manner.

### **Pre-match music**

The programmes of music before games is now presented by the Supporters' Club, and the committee is anxious to include items specially requested by supporters and to facilitate these requests a simple application form is appended and which should be completed and handed in to the Club Headquarters. So if you would like to hear your favourite record, please let us know as soon as possible.



F. J. ROPER  
Devizes Rd.  
Swindon  
Phone 22341

F. J. ROPER  
Cliftonian  
38 William St.  
Swindon  
Phone 3785

*Swindon's*  
*Finest*  
**FISH and CHIPS**

**CALL ON  
YOUR  
WAY  
HOME**

**M e n u**

**PLAICE  
HAKE  
COD  
SKATE**

**WE SHALL BE  
WAITING  
TO  
SERVE YOU**

F. J. ROPER  
High St.  
W'tton Bassett

F. J. ROPER  
Cross Hayes  
Malmesbury



**S.T.F.C. SUPPORTERS' CLUB  
RECORD REQUEST**

Please include the following record in the programme of pre-match music on ..... 196... or as soon as possible thereafter.

**TITLE** .....

**by** .....

**Name** ..... **Mr./Mrs./Miss**

**Address** .....

.....

.....

To: The General Secretary,  
S.T.F.C. Supporters' Club,  
County Ground,  
Swindon.



not just concrete, but . . .

**Premix**



**CLARK BROS. (Swindon) Ltd.**

Building and Civil Engineering Contractors

CONSULT US FOR  
BUILDING AND CIVIL ENGINEERING  
CONSTRUCTION IN ALL ITS PHASES

**STRATTON ROAD  
SWINDON**

Telephone  
Swindon 27261

The Advertisers in this programme have supported the Club. Will you help us reciprocate by supporting them whenever possible?



# DIVISION III

Date	Opponents	Ground	Result
<b>1965</b>			
August 21	OXFORD UNITED	(H)	0—0
23	YORK CITY	(A)	2—0
28	SWANSEA TOWN	(A)	1—1
September 1	HULL CITY	(A)	0—1
4	WALSALL	(H)	0—0
7	BRISTOL ROVERS	(A)	1—0
11	WORKINGTON	(A)	3—0
18	BOURNEMOUTH & B.A.	(H)	0—0
24	SOUTHEND UNITED	(A)	2—4
October 2	WATFORD	(A)	0—2
5	BRISTOL ROVERS	(H)	
9	GILLINGHAM	(H)	
16	MILLWALL	(A)	
19	YORK CITY	(H)	
23	PETERBOROUGH UNITED	(H)	
30	EXETER CITY	(A)	
November 6	READING	(H)	
13	(1)		
20	MANSFIELD TOWN	(H)	
27	QUEEN'S PARK RANGERS	(A)	
December 4	(2)		
11	SCUNTHORPE UNITED	(A)	
18	MILLWALL	(H)	
27	GRIMSBY TOWN	(A)	
28	GRIMSBY TOWN	(H)	
<b>1966</b>			
January 1	GILLINGHAM	(A)	
8	HULL CITY	(H)	
15	PETERBOROUGH UNITED	(A)	
22	(3)		
29	OXFORD UNITED	(A)	
February 5	SWANSEA TOWN	(H)	
12	(4) BRENTFORD	(H)	
19	WALSALL	(A)	
26	WORKINGTON	(H)	
March 5	(5) BRENTFORD	(A)	
12	BOURNEMOUTH & B.A.	(A)	
19	SOUTHEND UNITED	(H)	
26	(6) WATFORD	(H)	
April 1	READING	(A)	
9	BRIGHTON & HOVE ALBION	(H)	
11	OLDHAM ATHLETIC	(H)	
12	OLDHAM ATHLETIC	(A)	
16	MANSFIELD TOWN	(A)	
23	(S.F.) QUEEN'S PARK RANGERS	(H)	
26	SHREWSBURY TOWN	(H)	
30	BRIGHTON & HOVE ALBION	(A)	
May 7	SCUNTHORPE UNITED	(H)	
14	(FINAL)		
18	SHREWSBURY TOWN	(A)	
28	EXETER CITY	(H)	

© The Football League, Limited, 1965



# BRETTS

PET AND GARDEN SUPPLIES

32-33 Commercial Rd.  
Swindon

6 Cromwell St.  
Swindon

## HOLMES & LUCAS

For a complete range of the very latest in radio,  
television and all domestic appliances

Home demonstrations.

Top Part Exchanges

HOLMES & LUCAS, 14 Regent Street

Tel. 22526 & 4721

FOR ALL YOUR ANGLING NEEDS  
CONSULT

### FRANK WOODWARD

Swindon's Fishing Tackle Specialist

25 HAVELOCK ST., SWINDON  
PHONE 3879

For Paints of Good Quality

### H. S. HODGES & SONS (SWINDON) LTD.

CRICKLADE RD., SWINDON  
PHONE 22422

Dulux, Brolac, Valspar, Wallcharm,  
etc.

### SOUTHERN LAUNDRY Co. Ltd.

Launderers and Dry Cleaners

HAYDON ST. - SWINDON  
TELEPHONE 4161

### COMLEY'S

Modern Music Centre

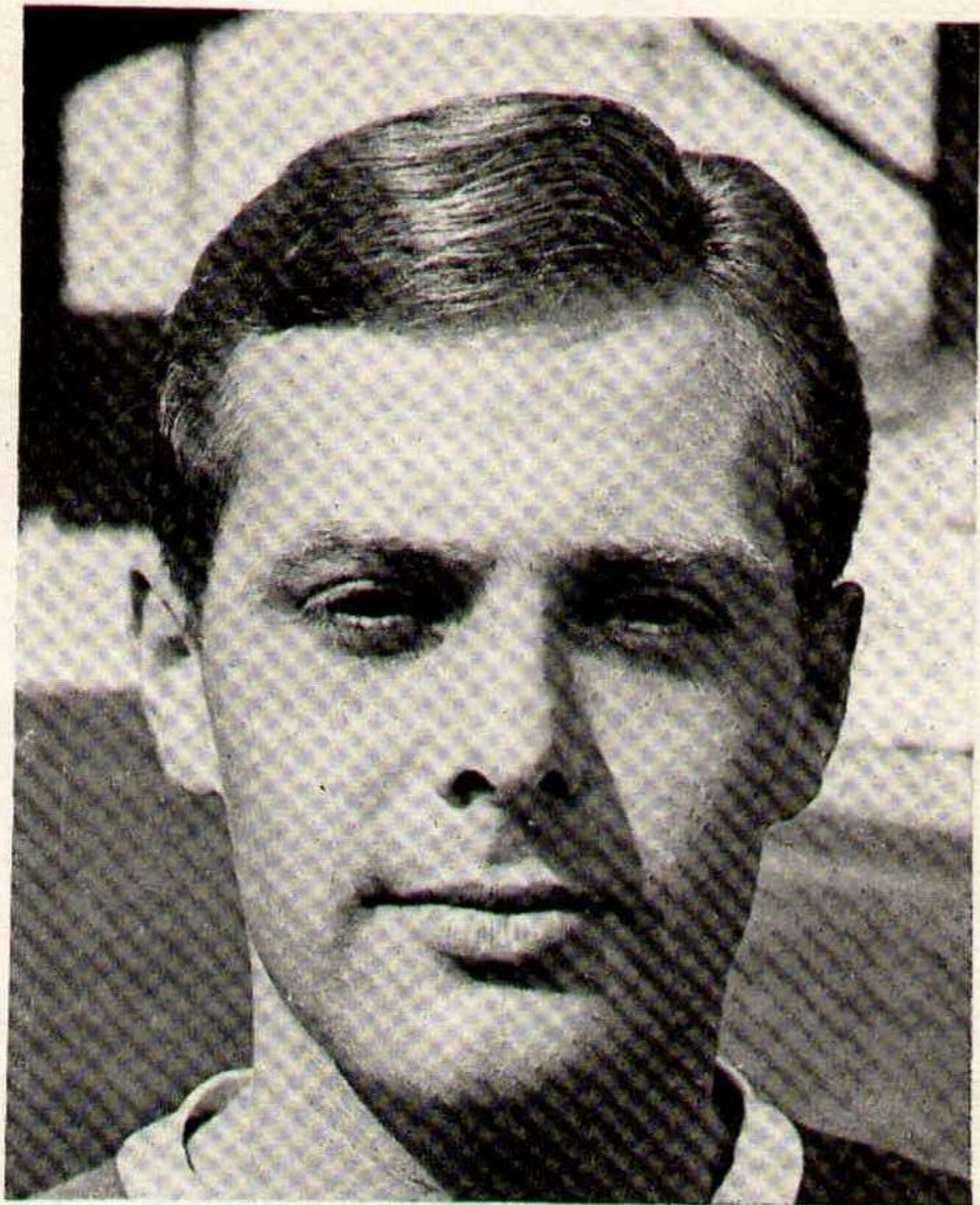
26 HAVELOCK ST., SWINDON

RECORDS - MUSIC - INSTRUMENTS

Top Twenty 'Pops' always in stock  
and wide selection of Jazz & Classics

Personal Supervision Phone 3874





Owen Dawson



**NEW HOUSES IN SWINDON  
AND THROUGHOUT  
WILTSHIRE FOR PEOPLE  
WHO APPRECIATE VALUE**

**BRADLEY**  
ESTATES 

**74 VICTORIA ROAD, SWINDON**

**Tel. 5865**



# **FORTHCOMING MATCHES**

**SATURDAY NEXT, 9th OCTOBER, 1965**

**DIVISION III**

## **GILLINGHAM**

**Kick-off 3 p.m.**

---

**TUESDAY, 12th OCTOBER, 1965**

**FOOTBALL COMBINATION**

## **WEST HAM UNITED**

**Kick-off 7.30 p.m.**

---

**TUESDAY, 19th OCTOBER, 1965**

**DIVISION III**

## **YORK CITY**

**Kick-off 7.30 p.m.**



## **Cecil Green**

Artistic Decorations in all its branches

12 Armstrong Street, Swindon, Wilts.

Tel. 4593

## **G. A. STREETLY**

**Tobacconist and Confectioner**

**10 BOURNE ROAD - MOREDON - SWINDON**

**Telephone: 4956**

"COAL!"  
"COAL!"  
"COAL!"

## **J. WILMER**

**St. Margaret's Road  
Swindon**

**TELEPHONE 22535**

## **LEESE, ING & CO. LTD.**

Mineral Water and Squash Manufacturers

**LANSDOWN ROAD - SWINDON**

**TELEPHONE 22744**



# FOOTBALL COMBINATION

Date	Opponents	Ground	Result
<b>1965</b>			
August 21	Crystal Palace	(A)	0—2
28	Plymouth Argyle	(H)	2—1
31	Tottenham Hotspur	(H)	0—3
September 4	Northampton Town	(A)	1—5
11	Chelsea	(H)	6—2
18	Arsenal	(A)	1—4
25	Tottenham Hotspur	(A)	1—3
October 2	Ipswich Town	(H)	1—3
9	Norwich City	(A)	
12	West Ham United	(H)	
19	Coventry City	(A)	
26	Leicester City	(H)	
November 10	Cardiff City	(A)	
13	Peterborough United	(H)	
20	Fulham	(A)	
23	Southampton	(H)	
December 4	West Ham United	(A)	
11	Norwich City	(H)	
18	Leicester City	(A)	
27	Ipswich Town	(A)	

## 1966

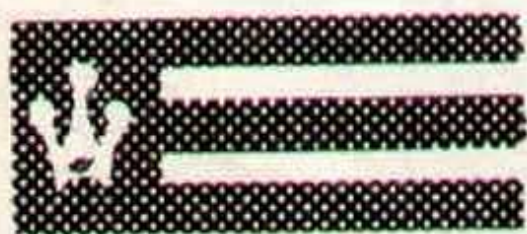
January 4	Coventry City	(H)	
8	Peterborough United	(A)	
11	Cardiff City	(H)	
18	Shrewsbury Town	(H)	
29	Crystal Palace	(H)	
February 5	Plymouth Argyle	(A)	
12		( )	
15	Northampton Town	(H)	
26	Chelsea	(A)	
March 3	Shrewsbury Town	(A)	
8	Arsenal	(H)	
19		( )	
26		( )	
29	Fulham	(H)	
April 9	Southampton	(A)	
16	Nottingham Forest	(A)	
23		( )	
30	Nottingham Forest	(H)	
May 7		( )	
14		( )	
21		( )	
28		( )	

© The Football League, Limited, 1965



Suppliers to the Swindon Team

**MAY WE SUPPLY YOU?**



**EARLE**

**of Chippenham Limited**

MAIN



DEALERS

**COCKLEBURY ROAD - CHIPPENHAM**

**Telephone 3255**



# DIVISION III

## League Table

	P	W	D	L	F	A	Pt.
Millwall .....	9	6	2	1	15	6	14
Watford .....	9	5	3	1	18	8	13
Hull .....	9	5	2	2	18	16	12
Grimsby .....	9	4	3	2	14	9	11
Oxford .....	9	4	3	2	13	9	11
Walsall .....	9	4	3	2	12	8	11
Gillingham .....	9	4	3	2	15	12	11
Bristol Rovers ...	9	4	2	3	16	12	10
<b>Swindon .....</b>	<b>10</b>	<b>3</b>	<b>4</b>	<b>3</b>	<b>9</b>	<b>8</b>	<b>10</b>
Shrewsbury .....	9	4	1	4	16	14	9
Workington .....	8	3	3	2	12	10	9
Peterborough ...	9	3	3	3	14	15	9
Mansfield .....	9	4	1	4	13	11	9
Q.P.R. ....	9	4	1	4	14	16	9
York .....	9	4	1	4	17	20	9
Brentford .....	9	3	2	4	16	10	8
Reading .....	9	2	4	3	12	13	8
Bournemouth ...	9	2	4	3	7	9	8
Exeter .....	9	2	3	4	11	13	7
Scunthorpe .....	9	2	2	5	11	15	6
Southend .....	8	2	1	5	10	15	5
Brighton .....	9	1	3	5	11	20	5
Oldham .....	8	2	1	5	11	21	5
Swansea .....	9	2	1	6	8	23	5



**BRITAIN'S FASTEST GROWING  
TRADE UNION**



***ASSET***

(Association of Supervisory Staffs, Executives & Technicians)

**Specialises exclusively in the problems of  
Supervisors, Executives and Technicians**

Full particulars:

**INDUSTRIAL OFFICER, 24 BRUNSWICK SQUARE, GLOUCESTER**

**Telephone: Gloucester 27633**



**Gates from £3**

**Singles and Doubles**

If you live in the Swindon area  
we will measure your gateway  
for you

**Manufacturers of tip-up stadium  
seating**

Send for free catalogue

**MARTYN LYNshaw LIMITED**

**20 Boundary Works**

**Stratton Road SWINDON 4177**

